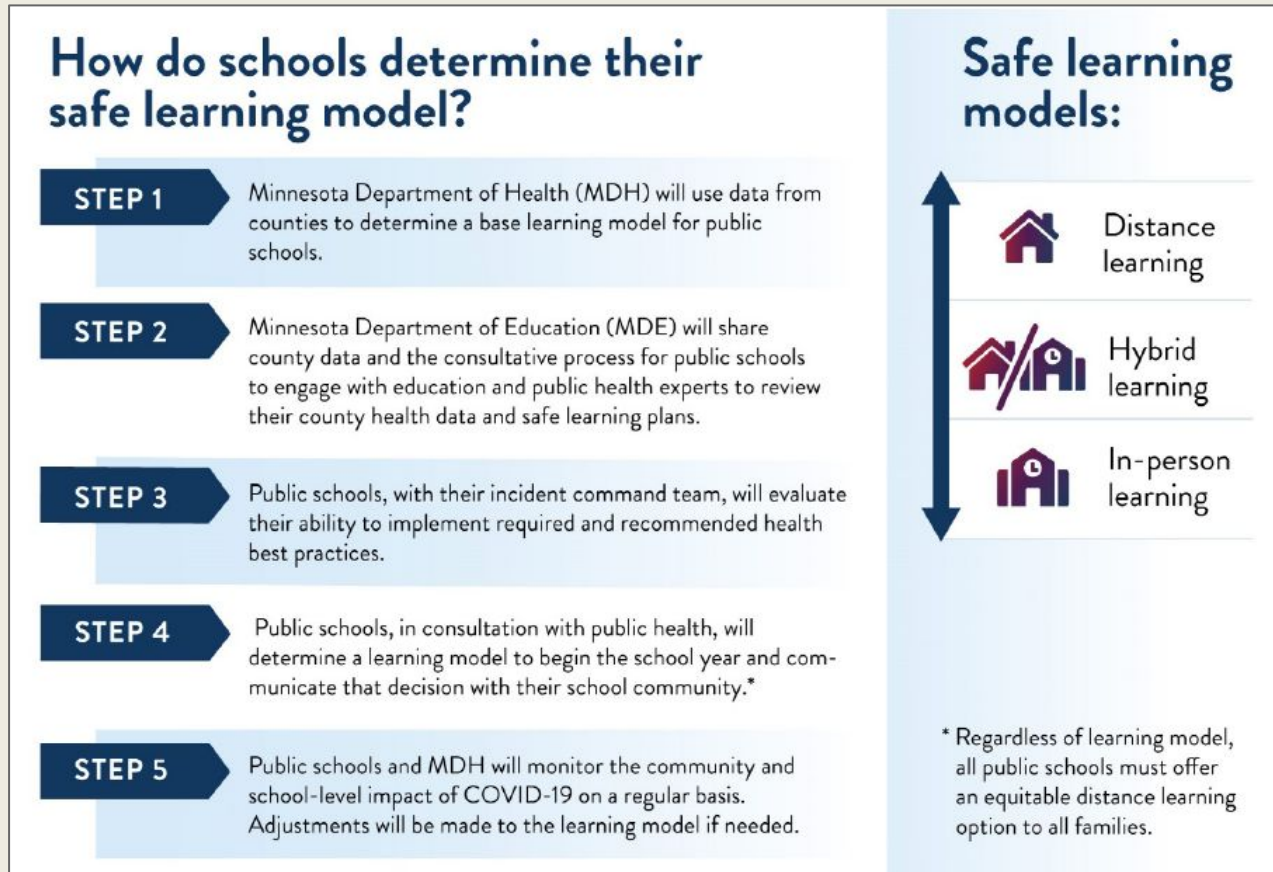


# Localized, data-driven approach

- Governor Walz’s Executive Order 20-82 states that all Minnesota public schools must adhere to parameters determined by the Minnesota Department of Health (MDH) in implementing or shifting between the three learning models.
- To begin the 2020-21 school year, MDH has developed parameters **using county public health data** to support the determination of learning models for each school district.



- In order to determine the base learning model, school districts will be advised of the b-weekly case rate (over 14 days) by county of residence. These data are the number of cases by county of residence in MN over 14 days per 10,000 people by date of specimen collection (when a person was tested).

Learning Model Parameters	
Number of cases per 10,000 over 14 days, by county of residence	Learning Model
0-9	In-person learning for all students
10-19	In-person learning for elementary students; hybrid learning for secondary students
20-29	Hybrid learning for all students
30-49	Hybrid learning for elementary students; distance learning for secondary students
50+	Distance learning for all students